



YAN YANG

Specialized in Drill EDM



Registered ISO 9001-2000

MACHINE CHARACTERS

- Machine frame is a high rigid column type structure. Workpiece weight won't affect the accuracy of the machine.
- X/Y/Z/W are installed with quality linear guides and ball screws.
- Machine base is positioned, calibrated and offset by Japan Caliper Checker.
- Fixed type tool magazine provides a stable and quick tool change.
- BT-20 stainless steel arbor has a high accuracy, and won't drip water.
- Patented design – the electrode can be rectified by auxiliary guide along a long distance of machining.
- ER COLLET – for a quick and easy replacing with electrode.
- Special work fluid can be added upon customer's request in order to achieve a faster discharge. Electrode won't be sharpened.

THE CHARACTERS OF CNC COMPUTER

- Adopt industrial grade PC controller and WINDOW CE work system.
- Self-developed software and dialog interface provide a fast and easy operation. Software can be modified depending on customer's need.
- AC servo motor is employed for a stable and precise positioning.
- Program transmission is through the Ethernet or USB port.
- Intellectual type depth offset function – just input the desirable machining depth, and the controller will automatically complete the work. Guarantee every hole is through.
- Circular dialog window and multi-edge finding function are coordinated with hand wheel micro-feed so that small hole positioning is quick and accurate.
- Maximum 8 axes of positioning are available depending on customer's need.
- The programs stored in the controller are enough to machine a maximum of 9999 holes.
- Machining conditions can be stored according to the category of the material of workpiece.
- A wide range of machining parameters provides an easy setting of low consuming parameter for machining electrode.
- Intellectual type electrode auto exchange – tool magazine management system and auxiliary guide designing provide a fast and stable electrode exchange.
- Special high pressure pump has a quick water spray and back flow. The electrode of brass pipe can stop water instantly without drip.
- Hole machining range is form $\varnothing 0.1\text{mm}$ to $\varnothing 6.0\text{mm}$.
- Blind hole machining function.



High Level CNC Drill EDM



SY-CNC2535



SY-CNC4060

MACHINE SPECIFICATIONS

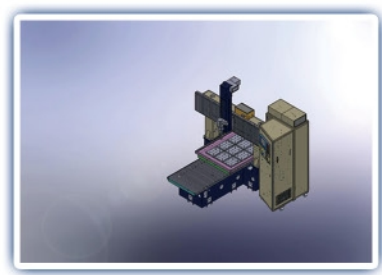
ITEM	MODEL	UNIT	SY-CNC2535	SY-CNC4060	SY-CNC9070	SY-CNC1210
Work table		mm	600x300	800x500	900x720	1300x1100
X / Y axis travel		mm	345x245	600x400	900x700	1200x1000
Z / W axis travel		mm	345x200	400x350	400x510	400x1000
Machine weight		KGS	950	2000	2800	5500
Max. workpiece weight		KGS	300	800	1000	2500
Guide between worktable		mm	5~370	5~380	25~538	5~1100
Machine dimension(LxWxH)		mm	1620x1140x2325	2130x1900x2157	2620x2660x2350	2650x3410x3610
Power source		V	220/380/415/440	220/380/415/440	220/380/415/440	220/380/415/440
Max. machining current		A	30	30	30	30
Max. power consumption		KVA	4	4	4	4

STANDARD ACCESSORIES

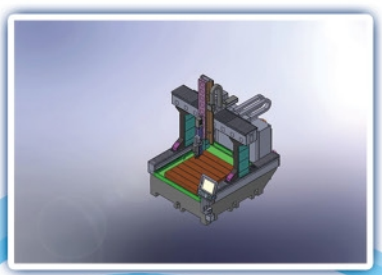
- | | |
|---|--|
| 1. Submerge Work Tank | 11. Philip's Head & Flat Head Screwdriver /1set |
| 2. MPG /1set | 12. Hexagon Wrench Set /1set |
| 3. Digital Pressure Switch /1set | 13. Quartz Lamp /1pcs |
| 4. Tool Box /1set | 14. ER Rubber Chuck /20pcs |
| 5. Ceramic Guide1.0mm /1pcs | 15. Motor and Flush Stand /1set |
| 6. Brass Tube 1.0mm*400L /20pcs | 16. Tool Lock Stand /1set (SY-CNC2535 without it) |
| 7. Precise Electrode Chuck /1pcs (SY-CNC2535) | 17. Tool Chuck Set*2sets Including Collet Rubber Chuck (SY-CNC2535 without it) |
| 8. Leveling Pad /1set | 18. ER Collet Set /1set. 7pcs (SY-CNC2535 without it) |
| 9. Disposable Filter /2pcs | 19. NC Connecting with Software /1set |
| 10. Parallel Working Pad /1set | 20. Web Wire10m /1pcs |

OPTIONAL ACCESSORIES

- | |
|--|
| 1. Water Tank (including ionization treatment) /1set |
| 2. Chiller |
| 3. AVR (automatic voltage regulator) |
| 4. Precise Pneumatic Chuck (for SY-CNC2535) |
| 5. XY Linear Scale |
| 6. ER Collet |
| 7. Japan Electric Piston Pump |



SY-CNC9070



SY-CNC1210

HIGH LEVEL AUTOMATIC ELECTRODE CHANGER CNC DRILL EDM

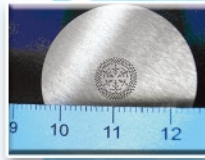


SY-CNC2535T

Workpiece: SKD61/HRC56°
 Work Fluid: water / 100us~25us
 Machining Electrode:
 Ø 0.2mm/BS (Bronze Tube)
 Hole Machining Range:
 Ø 0.258-0.266mm
 Each Hole Machining Time:
 0°32"-0°35"

Hole Machining Number:
 2086 holes
 Use machining electrode:
 Ø 0.5mm

Machining Workpiece:
 NAK80
 Machining Method:
 combine two workpieces and do
 the machining in the core.
 Machining Electrode:
 Ø 0.5mm/3 holes
 Ø 0.7mm/3holes
 Ø 1.0mm/3 holes



SY-CNC4050T

MACHINE SPECIFICATIONS

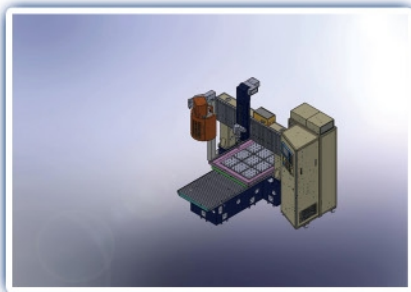
ITEM	MODEL	UNIT	SY-CNC2535T	SY-CNC4050T	SY-CNC9070T	SY-CNC1210T
ATC		pcs	12	20/30	20/30	20/30
Work table		mm	600x300	800x500	900x720	1300x1100
X / Y axis travel		mm	345x245	500x400	900x700	1200x1000
Z / W axis travel		mm	400x350	400x350	400x510	400x1000
Machine weight		KGS	1000	2200	2800	5500
Max. workpiece weight		KGS	300	800	1000	2500
Guide between worktable		mm	5~360	5~380	25~538	5~1000
Machine dimension(LxWxH)		mm	1620x1140x2325	2290x1850x2270	2620x2660x2350	2650x3410x3610
Power source		V	220/380/415/440	220/380/415/440	220/380/415/440	220/380/415/440
Max. machining current		A	30	30	30	30
Max. power consumption		KVA	4	4	4	4

STANDARD ACCESSORIES

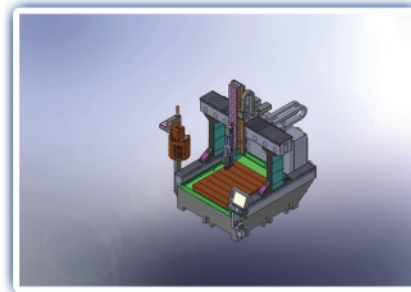
1. Submerge Work Tank	8. Leveling Pad/1set	15. Motor and Flush Stand/1set
2. MPG/1set	9. Disposable Filter/2pcs	16. Tool Lock Stand/1set
3. Digital Pressure Switch/1set	10. Parallel Working Pad/1set	17. Tool Chuck Set(12/20/30) Including Collet Rubber Chuck
4. Tool Box/1set	11. Philip's Head & Flat Head Screwdriver/1set	18. ER Collet Set /1set.7pcs
5. Ceramic Guide1.0mm/1pcs	12. Hexagon Wrench Set/1set	19. NC Connecting with Software/1set
6. Brass Tube 1.0mm*400L/20pcs	13. Quartz Lamp/1pcs	20. Web Wire10m/1pcs
7. Precise Pneumatic Chuck/1set	14. ER Rubber Chuck/20pcs	21. Water Tank (including ionization treatment)/1set

OPTIONAL ACCESSORIES

1. Chiller
2. AVR(automatic voltage regulator)
3. X/Y Linear Scale
4. ER Collet
5. Japan Electric Piston Pump



SY-CNC9070T



SY-CNC1210T



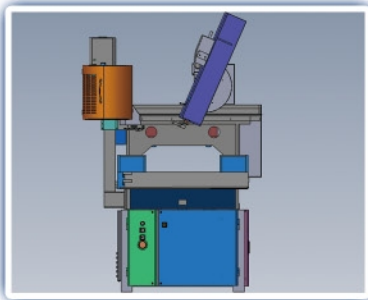
YAN YANG PRECISION IND. CO., LTD.

SPECIAL & AERO SPACE CNC DRILL EDM

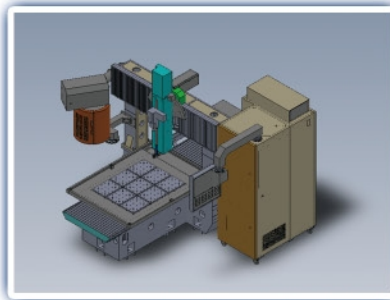


SY-CNC4050TU

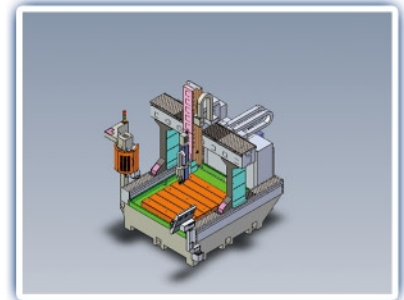
- X/Y/Z/W/A/B/U/C 8 axis Control
- A/B axis Rotary Tables
- U axis Machine Head tilt $\pm 45^\circ$ & $\pm 100^\circ$
- C axis Rotation Spindle Speed Control
- Z axis Brass Tube 400mm & 600mm



SY-CNC4050TGUR



SY-CNC9070TGU



SY-CNC1210TGU

STANDARD CNC DRILL EDM



YY-CNC2535



YY-CNC4060



YY-CNC4050T



YAN YANG PRECISION IND. CO., LTD.

STANDARD CNC DRILL EDM

Machine Mode

Item	Model	UNIT	YY-CNC 2535	YY-CNC4050T	YY-CNC4060
ATC(AEC)		PCS	----	10	----
Work table		mm	600x300	800x500	800x500
X /axis travel		mm	345	550	650
Y /axis travel		mm	245	400	400
Z /axis travel		mm	345	400	400
W /axis travel		mm	200	350	350
Electrode guide travel		mm	150	----	----
Machine weight		KGS	950	2200	2000
Max.workpiece weight		KGS	300	800	800
Guide between worktable		mm	5-370	5-380	5-380
Machine dimension(LxWxH)		mm	1620x1140x2325	2290x1850x2270	2130x1900x2157
Power source		V	220/380/415/440	220/380/415/440	220/380/415/440
Max.machining current		A	30	30	30
Max.power consumption		KVA	4	4	4

• Supplementary explanation:

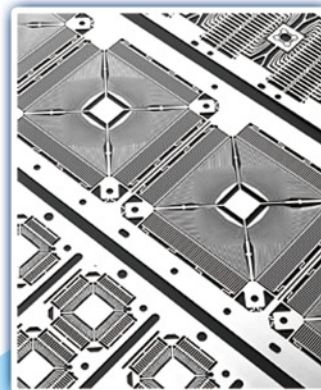
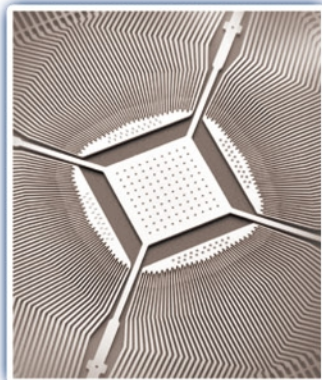
YY-CNC2535/X,Y,W Axis with AC serve , Z Axis with DC serve . YY-CNC4050T & YY-CNC4060/ X,Y,Z,W Axis with AC serve.

YY-Series Standard Accessories content:

1. Flush Work Tank / 1 set
2. Tool Box / 1 pc
3. Levelling Pad / 1 set
4. Philip's Head & Flat Head Screwdriver / 1 set
5. Hexagon Wrench Set / 1 set
6. Ceramic Guide 1.0mm / 1 pc
7. Brass Tube 1.0mm* 400L / 20 pcs
8. Rubber Chuck / 20 pcs
9. Disposable Filter / 2 pcs
10. Water Tank 30L / 1 set (only clean water no filter system)
11. Motor and Flush Stand / 1 set
12. Bucket 30L (for dirty water) / 1 pc
13. Quartz Lamp / 1 set
14. Precise Electrode Chuck 0.2-3.0mm / 1pc (for YY-CNC2535)
15. Precise Pneumatic Chuck / 1 set (for YY-CNC4050T & YY-CNC4060)
16. ER Precise Collet 0.2-6.0mm (7pc) / 1 set (for YY-CNC4050T & YY-CNC4060)
17. Tool Lock Stand / 1 set (for YY-CNC4050T & YY-CNC4060)
18. Tool Storage (20 pc) / 1 set (for YY-CNC4050T)
19. Tool Chuck Set / 1 set (for YY-CNC4060) / 10 set (for YY-CNC4050T)

OPTIONAL Accessories content:

1. Submerge Work Tank
2. Water Tank 200L (Including water filter and ionization treatment)
3. MPG (Manual pulse generator)
4. Electric Piston Pump (Japan)
5. Precise 3 Jaws Chuck
6. Tool Chuck
7. Digital Pressure Switch
8. ER Collet (stainless)



CARBIDE DRILL EDM



SY-2535S



SY-CNC2535S



SY-CNC2535ST

MACHINE SPECIFICATIONS

ITEM	MODEL	item	SY-2535S	SY-CNC2535S	SY-CNC2535ST	SY-CNC4050ST
ATC	pcs		----	----	12	20/30
Work table	mm		600x300	600x300	600x300	800x500
X / Y axis travel	mm		345x245	345x245	345x245	500x400
Z / W axis travel	mm		345x200	345x200	400x350	400 x350
Electrode guide travel	KGS		150	150	-----	-----
Machine weight	KGS		950	950	1000	2200
Max. workpiece weight	mm		300	300	300	800
Guide between worktable	mm		5~370	5~370	5~360	5~380
Machine dimension(LxWxH)	V		1620x1140x2325	1620x1140x2325	1620x1140x2325	2290x18500x2270
Power source	A		220/380/415/440	220/380/415/440	220/380/415/440	220/380/415/440
Max. machining current	KVA		30	30	30	30
Max. power consumption			4	4	4	4

STANDARD ACCESSORIES

1. Oil Tank (oil filter) /1set	6. Parallel Working Pad /1set	11. Quartz Lamp /1pcs
2. Tool Box/1set	7. Leveling Pad /1set	12. Rubber Chuck /20pcs
3. Disposable Filter /2pc	8. Philip's Head & Flat Head Screwdriver /1set	13. Fire Extinguisher /1set
4. Ceramic Guide0.3mm /1pcs	9. Hexagon Wrench Set /1set	
5. Copper Tube 0.3mm*300L /50pcs	10. Disposable Filter /2pcs	



YAN YANG PRECISION IND. CO., LTD.

ECONOMIC MANUAL DRILL EDM



SYF-16



SY-2030F

MACHINE SPECIFICATIONS

ITEM	MODEL	item	SYF-16	SY-2030F
Work table	mm		460x210	460x210
X.Y axis travel	mm		300x200	300x200
Z axis travel	mm		345	345
X.Y.Z DRO resolution	mm		0.005	0.005
Electrode guide travel	mm		150	150
Guide between worktable	mm		50~200	50~200
Max.workpiece weight	KGS		200	200
Machine weight	KGS		550	550
Machine dimension (LxWxH)	mm		800x800x2000	800x800x2000
Power source	V		220/380/415/440	220/380/415/440
Max.machining current	A		30	30
Max.Power consumption	KVA		4	4

STANDARD ACCESSORIES

SYF-16: 2 Axis (X.Y) D.R.O. without depth setting	
SY-2030F:3 Axis D.R.O with depth setting (X.Y axis with linear scales, Z axis with encoder)	
1.Disposable Filter	2 pcs
2.Toolbox with Tools	1 set
3.Ceramic Guide 1.0mm	1 pc
4. Electrode Brass Tube 1.0mm×400mm	10 pcs
5.Levelling Plate	1 set
6. Electrode Holder with Handle(0.3~3.0mm)	1 pc
7.Rubber Chuck	10 pcs
8. Cross & Flat Screw Driver	1 pc
9. Bucket	2 pcs
10. Hexagon Screw Wrench	1 set

MANUAL DRILL EDM



SY-2030A



SY-2535



SY-3545

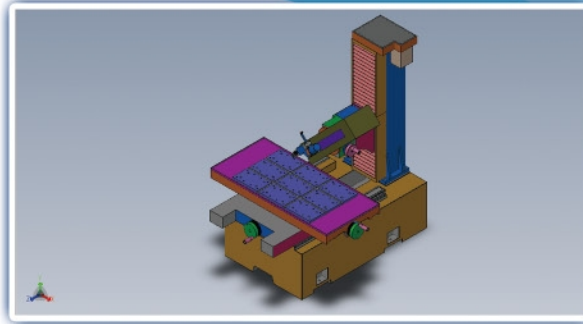


SY-4055



YAN YANG PRECISION IND. CO., LTD.

MANUAL DRILL EDM



SY-4055U

MACHINE SPECIFICATIONS

ITEM	MODEL	item	SY-2030A	SY-2535	SY-3545	SY-4055	SY-4055U
Work table	mm		480x210	600x300	600x300	800x450	800x450
X / Y axis travel	mm		300x200	350x250	450x350	550x400	550x400
Z / W axis travel	mm		345x200	345x200	345x200	345x250	345x250
XYZ DRO resolution	mm		0.005	0.005	0.005	0.005	0.005
Electrode guide travel	mm		150	150	150	150	150
Guide between worktable	mm		5~360	5~370	5~380	95~495	95~495
Max. workpiece weight	KGS		200	400	500	800	800
Machine weight	KGS		650	800	1000	1500	1500
Machine dimension(LxWxH)	mm		1000x1020x2070	1080x1080x2100	1400x1400x2200	1600x1500x2050 +(500x450x800)	1600x1500x2050 +(500x450x800)
Power source	V		220/380/415/440	220/380/415/440	220/380/415/440	220/380/415/440	220/380/415/440
Max. machining current	A		30	30	30	30	30
Max. power consumption	KVA		4	4	4	4	4

STANDARD ACCESSORIES

It can do depth setting of XY axis linear scale, Z axis encoder and 3 axis DRO,		
1. Tool Box /1set	6. Ceramic Guide1.0mm /1pcs	11. Quartz Lamp /1pcs
2. Leveling Pad /1set	7. Brass Tube 1.0mm*400L /20pcs	12. Parallel Working Pad /1set
3. Philip's Head & Flat Head Screwdriver /1set	8. Rubber Chuck /20pcs	13. Motor and Flush Stand /1set
4. Hexagon Wrench Set /1set	9. Disposable Filter /2pcs	
5. Precise Electrode Chuck 0.2-3.0mm /1set	10. Bucket /2pcs	

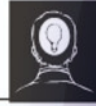
OPTIONAL ACCESSORIES

1. ER Spindle (machining for 3.0~6.0mm)
2. Japan Electric Piston Pump

Do you know how much labor and mistake cost
can be saved in your drilling E.D.M.?



Do you know the drilling E.D.M. can be automated?



Do you know the drilling E.D.M. can boost efficiency
if change the electrode automatically?



YAN YANG PRECISION IND. CO., LTD.

No.38, Lane 140, Wunchang 2nd St., Dadu Dist., Taichung City 432, Taiwan

Tel: 886-4-26998885 Fax: 886-4-26998884

E-mail: tsy.edm@msa.hinet.net <http://www.tsyedm.com>