

ECO LASER

The perfect entrance

Cost-efficient laser welding system for
small series and individual parts



laserpoint
grupa sumaris

www.laserpoint.pl



SMART JOYSTICK

Original digital-analog joystick allows a smooth motion control in three axes + rotary movement. Includes Teach-In functions for automated movement (linear and circular welding path programming).

CONTROL PANEL

Ergonomic, clear design where the most important functions are at the touch of a finger. In addition, all technical parameters can be saved and loaded if necessary.



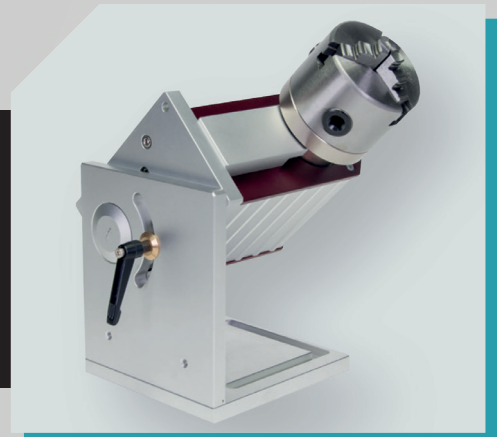
LEICA BINOCULARS

High-quality binoculars with a 10x or 16x magnification allowing precise positioning of the welding position with an accuracy of 0.1 mm.



OPTIONAL MOTORIZED SWIVEL AND TILT HANDLE

A motorized axis rotates the workpiece during engraving or welding. For laser welding systems.



ECO LASER

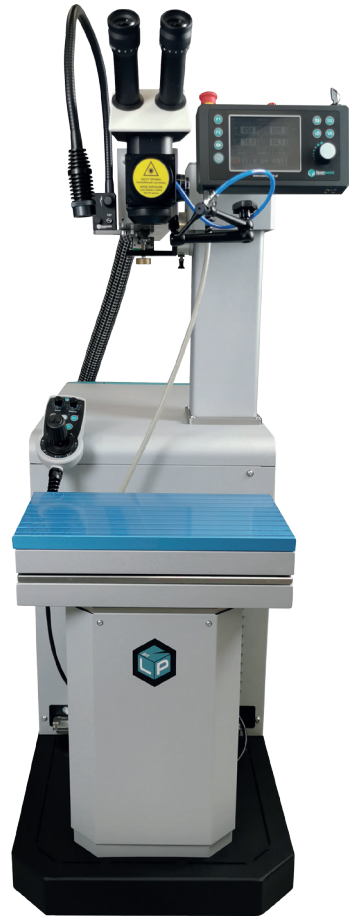
The refreshed ECO stationary model in a new aesthetic and economical form. Designed and created for processing of small series and single details, e.g. tools and molds up to a weight of 150 kg.

Application area in many industries: electronics, mold and tool construction, medicine, aerospace, mechanical engineering, etc.

Perfect for welding small precise details. Thanks to the open structure of the device, you can easily manipulate the workpiece, and the control of the table via a joystick in three axes allows for precise positioning and welding.

With up to 200W of power available, you can weld all available metal alloys. We also have the right solutions for automated welding tasks.

An additional R axis enables synchronized welding in rotation.



The ECO Laser laser system is ideal for repairing small-sized molds. The Eco model can be installed in virtually any room. Thanks to the extensive range of accessories, we can find a solution for every task.

The system is intuitively controlled via screen touch. All important parameters are easily accessible and the most important functions are at the touch of a finger. In addition, all technical parameters can be saved and, if necessary, loaded from the memory of up to 100 programs.

ECO LASER key features:

- Motorized sliding in X / Y / Z axes and R axis
- Teach-In function
- Direct laser generation source (resonator)
- Synchronization
- Slick and practical joystick design
- Table with a load capacity of up to 150 kg

Technical data

	ECO 160	ECO 200
Laser type	Nd: YAG	Nd: YAG
Max. mean power	160 W	200 W
Pulse peak power	7,5 KW	9,0 KW
Max. pulse energy	80 J	100 J
Pulse duration	0,4 - 20 ms	0,4 - 20 ms
Pulse frequency	0,5 - 20 Hz	0,5 - 20 Hz
Focus diameter	0,2 - 2,0 mm	0,2 - 2,0 mm
Line voltage (V/Ph/Hz)	400V/3/50-60	400V/3/50-60
Order number	ECO-LP160	ECO-LP200

Laser system

Laser resonator inclusive resonator mechanics * Pump chamber * Laser rod * Cavity * Resonator mirror * Safety shutter * Beam extension * Power supply including circuit breaker * Power disconnecting switch * Emergency stop switch * Interface with hardware monitoring function * Industry controller for setting and display of power, pulse duration, pulse frequency with external trigger via foot switch * Capacitor bank * Internal water-air cooling system

Processing optics

Variable beam expansion * Safety glass * LCD anti-glare * Binoculars 10X * Focussing lens

Linear system

4-axis controller * Operation via joystick * Traverse range z-axis: 400mm (table) * x-y axis for working table with stepper motor * Positioning speed 0,5 - 15 mm/s * Travel: x-axis: 200mm / y-axis: 120mm * LED lighting * Inert gas supply directly controlled via magnetic valve

Dimensions and weight

Dimensions: width 472mm x height 1270mm x length 1160 mm * Weight 190 kg netto

Installation

For a fee, our technicians will provide professional installation and connection of the device on site at the customer's plant as well as basic staff training.

Useful accessories



Wearing part set S-160/200/300

for inspection and cleaning of your laser.
Includes laser lamp, lens protective glass,
LED insert and protective kit (glass+IR filter)
for LED lighting, mesh filter, cleaning and
inspection butresses
S-160 - **ON: 2700028**
S-200 - **ON: 2700011**



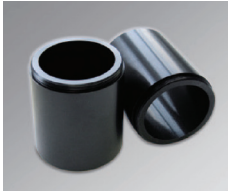
Nd laser lamps

Nd laser flash lamps for all Laserpoint
systems. Lamp life is on average up to 3
million discharges.
LS-P 160 - **ON: 2700012**
LS-P 200 - **ON: 2700013**



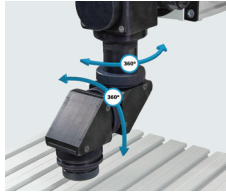
Focus lenses

different focal length laser lenses:
100 mm, 150 mm, 200 mm + adapter
M50/M56.
F150 mm - **ON: 2200027/T**
F200 mm - **ON: 2200010/T**



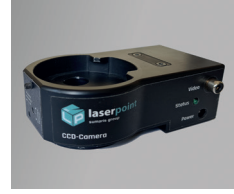
Lens extension

extension of the focus position,
extension height 100 mm,
in size M50 and M55.
ON: 2200005



360° optical swivel head

360° optical head for easier welding in
hard-to-reach places with large molds and
bulky parts 2 x 360° - horizontally
and vertically.
ON: 2200012



CCD camera

for live view of the welding process on
the material surface. Analog camera,
PAL system, 15mm field of view.
ON: 2300029



LED ring light

ring lighting DC 12V - LED with 144 LEDs
20000 Lux, 6400 K various light settings,
dimming 0-100% distance range: 40-250 mm,
low power consumption 4.5 W.
ON: 32-RB2



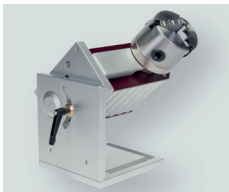
Regulator for protective gas (Ar)

required for shielded gas welding and
optimal adjustment of gas flow from
0 - 5 l/h on the processed part.
ON: 2500015



Protective glasses

Fiber / YAG Laser protection range
(850-1300 nm), essential protection for
your eyes.
ON: 32-LSG-A



Motorized swivel and tilt handle

A motorized axis rotates the workpiece
during engraving or welding. For laser
welding with ECO systems we recommend
models with three-jaw chuck Ø 80 mm.
ON: 32-MRD80



Magnetic spheres

Magnetic spheres of various sizes for easy
attachment and manipulation of the
workpiece under a microscope. High-quality,
strong magnets.
magn. Ø 100 mm, sph. Ø 120 mm - **ON: MCB100**
magn. Ø 125 mm, sph. Ø 170 mm - **ON: MCB125**



Extractor III 200W - mobile extraction and filter system

For the absorption of dust, as well
as harmful combustion fumes, e.g.
generated during the welding and
laser engraving of metals.
ON: 36-780A

Laserpoint around the world



Headquarters

POLAND

Laserpoint Sp. z o.o.

22 Graniczna St., 62-002 Złotniki,
Poland

Tel: +48 535 556 027 , +48 577 405 402

e-mail: info@laserpoint.pl

www.laserpoint.pl



World representatives

EUROPA

Czech Republic · Slovakia ·
Ukraine · Germany · Hungary · France · United
Kingdom

AMERICA

Mexico

ASIA

India · Turkey

Representative



Cost-efficient laser welding technology for large and small workpieces (mold and tool elements), small series and individual parts.

www.laserpoint.pl