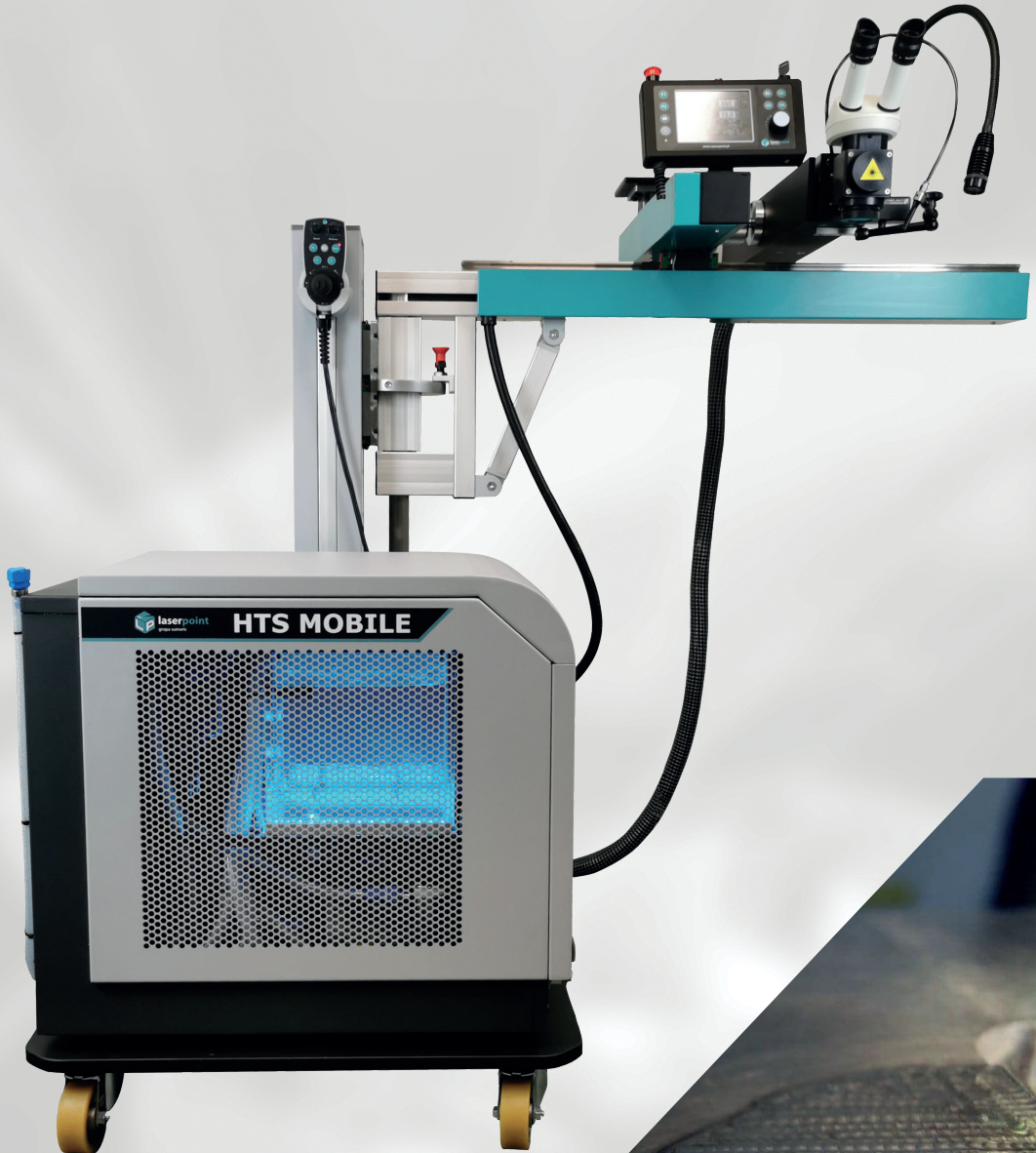


HTS MOBILE

Versatility meets stability

Laser technology for large and small workpieces





WELDING OF LARGE PIECES

Thanks to its mobility, HTS Mobile is perfect for welding large molds - without weight or size restrictions.

SWIVEL ARM

Practical, easy and quick positioning of laser's head thanks to rotational capability of the stand (0-180°), and with large sliding ranges in all directions (X - 700 mm, Y - 400 mm, Z - 570 mm).



LEICA BINOCULARS

High-quality binoculars with a 10x or 16x magnification allow for precise positioning of the welding position with an accuracy of 0.1 mm.

SMART JOYSTICK

Original digital-analog joystick allows a smooth motion control in three axes + rotary movement. Includes Teach-In functions for automated movement (linear and circular welding path programming).



HTS MOBILE

The HTS Mobile laser system combines flexibility and stability in repairs ranging from small precision parts to large injection molds.

Large tools, weighing from several to several dozen tons, require such mobile structures, allowing the access of the laser beam to various places.

The HTS MOBILE laser system is a tilt-articulated arm structure with a range of 1 - 1.5 m. with minimized vibration.

The combination of a swivel arm, movable resonator and optional head with 360° torsion optics allows almost any component (place) to be welded, regardless of size, geometry and position.

The device can be easily moved and stably positioned thanks to the brakes. This results in minimal setup times.

The system is equipped with a digital / analog joystick with Teach-In function.



By using high-quality Leica binoculars with 10x or 16x magnification, the welding positions can be determined precisely with an accuracy of 0.1mm.

The HTS Mobile laser system is very well prepared for surfacing both typical steel alloys used in the construction of molds and tools, but also aluminum, bronze or titanium.

With the help of the lens extensions and the 360° optical swivel head as an add-on module, no angle remains inaccessible. The laser beam is guided with millimeter accuracy to the welding point. The minimum set-up times of the HTS Mobile device, as well as long axis slide range, minimize the workload when welding tools (molds).



HTS MOBILE key features:

- Minimized vibrations thanks to the high-quality rail guide system
- Motorized sliding in X / Y / Z axes and R axis
- Direct laser generation source (resonator)
- Teach-In function



Technical data

	160 W	200 W	300 W
Laser type	Nd: YAG	Nd: YAG	Nd: YAG
Max. mean power	160 W	200 W	300 W
Pulse peak power	7.5 KW	9.0 KW	13.0 KW
Max. pulse energy	80 J	100 J	150 J
Pulse duration	0.4 - 20 ms	0.4 - 20 ms	0.4 - 20 ms
Pulse frequency	0,5 - 20 Hz	0,5 - 20 Hz	0,5 - 20 Hz
Focus diameter	0.2 - 2.0 mm	0.2 - 2.0 mm	0.2 - 2.0 mm
Line voltage (V/Ph/Hz)	400/3/50-60	400/3/50-60	400/3/50-60
Order number	HTS-LP160	HTS-LP200	HTS-LP300

Laser system

Laser resonator with mechanics * crystal * quantron * resonator mirrors * protective shutter * power supply with protections * mains switch * emergency switch * interface with equipment monitoring * industrial control panel for indication and setting of power, time and pulse frequency, with external trigger via foot pedal * condenser bank * internal water-air cooling system

Working optics

Adjustable beam diameter expander * protective glass * LCD protective shutter * 10x binocular (Leica) * focusing lens

Linear system

Motorized Z axis for resonator * joystick operation * travel path for Z axis: 570 mm, X / Y axes for resonator positioning driven by stepper motors * positioning speed 0.5 - 15 mm/s * slide: X axis - 700mm / Y axis - 400 mm * LED lighting * resonator ball mount enabling tilting setting for welding large molds * protective gas supply controlled by a magnetic valve * stable structure made of aluminum profiles with powder-coated steel sheet covers * solid base of the stand on wheels

Dimension and weight

Dimensions: width 950mm x height 1550mm x length 1250mm * weight 370 kg net.

Installation

For a fee, our technicians will provide professional installation and connection of the device on site at the customer's plant as well as basic staff training.

Useful accessories



Wearing part set S-160/200/300

for inspection and cleaning of your laser.
Includes laser lamp, lens protective glass,
LED insert and protective kit (glass+IR filtr)
for LED lighting, mesh filter, cleaning and
inspection buttresses
S-160 - **ON: 2700028** | S-200 - **ON: 2700011**
S-200 - **ON: 2700042**



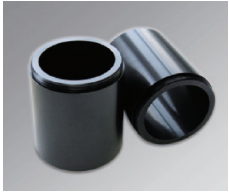
Nd laser lamps

Nd laser flash lamps for all Laserpoint
systems. Lamp life is on average up to 3
million discharges.
LS-P 160 - **ON: 2700012**
LS-P 200 - **ON: 2700013**
LS-P 300 - **ON: 2700055**



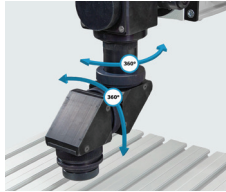
Focus lenses

different focal length laser lenses:
100 mm, 150 mm, 200 mm + adapter
M50/M56.
F150 mm - **ON: 2200027/T**
F200 mm - **ON: 2200010/T**



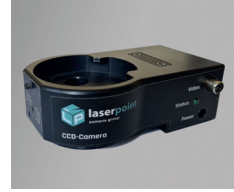
Lens extension

extension of the focus position,
extension height 100 mm,
in size M50 and M55.
ON: 2200005



360° optical swivel head

360° optical head for easier welding in
hard-to-reach places with large molds and
bulky parts 2 x 360° - horizontally
and vertically.
ON: 2200012



CCD camera

for live view of the welding process on
the material surface. Analog camera,
PAL system, 15mm field of view.
ON: 2300029



External cooling system

compressor cooling system with a
cooling capacity of 3.0 kW / 230V supply
voltage or 8,2 kW / 400V supply voltage .
Chiller CY-6000 (3 kW) - **ON: 32-ChZ60**
Chiller CY-8500 (8 kW) - **ON: 32-ChZ85**



Regulator for protective gas (Ar)

required for shielded gas welding and
optimal adjustment of gas flow from
0 - 5 l/h on the processed part.
ON: 2500015



Protective glasses

Fiber / YAG Laser protection range
(850-1300 nm), essential protection for
your eyes.
ON: 32-LSG-A



Motorized swivel and tilt handle

A motorized axis rotates the workpiece
during engraving or welding. For laser
welding with HTS systems we offer 2
models with three-jaw chuck :
Ø 80 mm motor - **ON: 32-MRD80**
Ø 120 mm motor - **ON: 32-MRD120**



Magnetic spheres

Magnetic spheres of various sizes for easy
attachment and manipulation of the
workpiece under a microscope. High-
quality, strong magnets.
magn. Ø 125 mm, sph. Ø 170 mm - **ON: MCB125**
magn. Ø 160 mm, sph. Ø 210 mm - **ON: MCB160**



Extractor III 200W - mobile extraction and filter system

For the absorption of dust, as well
as harmful combustion fumes, e.g.
generated during the welding and
laser engraving of metals.
ON: 36-780A

Laserpoint around the world



Headquarters

POLAND

Laserpoint Sp. z o.o.

22 Graniczna St., 62-002 Złotniki,
Poland

Tel: +48 535 556 027 , +48 577 405 402

e-mail: info@laserpoint.pl

www.laserpoint.pl



World representatives

EUROPA

Czech Republic · Slovakia ·

Ukraine · Germany · Hungary · France · United

Kingdom

AMERICA

Mexico

ASIA

India · Turkey

Representative



Cost-efficient laser welding technology for large and small workpieces (mold and tool elements), small series and individual parts.

www.laserpoint.pl